

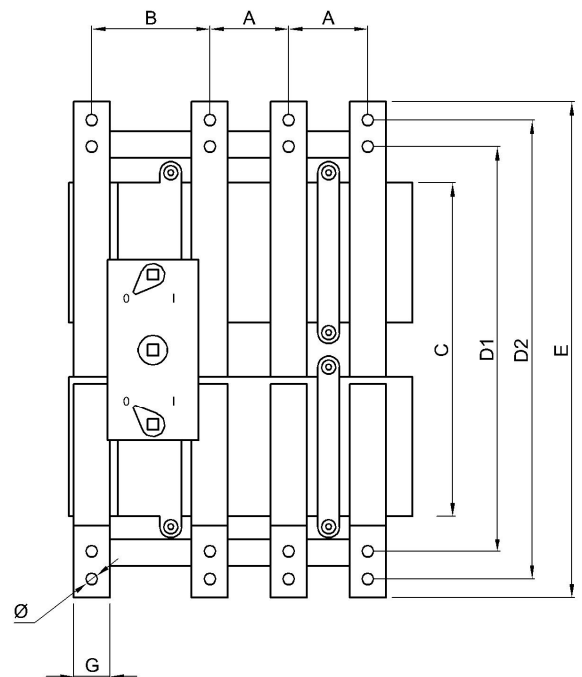
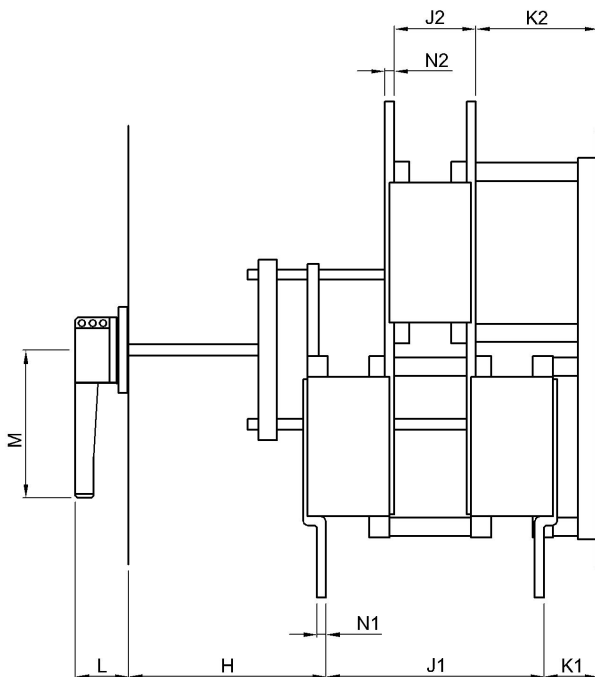
# Switchgear Systems Ltd - Technical Data Sheet

## BPV Bypass Switches 250A - 1000A

- Manufactured by Contactplasma S.R.L. Italy.
- Designed and tested in compliance with BS EN 60947-3.

TYPE (SERIES)			BPV25	BPV30	BPV40	BPV63	BPV80	BPV100
RATED THERMAL CURRENT AT 40° MAX A.T. $I_{th}$	Enclosed	A	250	300	400	630	800	1000
RATED VOLTAGE OF ISOLATION $U_i$	a.c.	V	1000	1000	1000	1000	1000	1000
	d.c.	V	600	600	600	600	600	600
IMPULSE WITHSTAND VOLTAGE	-	kV	8	8	8	8	8	8
OPERATIONAL CURRENT AC23A $I_e$	415V	A	250	250	250	500	800	800
	500V		125	160	160	315	400	400
	690V		100	100	100	160	200	200
OPERATIONAL CURRENT AC22A $I_e$	415V	A	250	300	400	630	800	1000
	690V		160	160	160	315	500	500
REACTIVE POWER see Note 1	380V	kVAr	125	150	200	280	300	320
RATED SHORT CIRCUIT MAKING CAPACITY $I_{cm}$	415V	kA peak	40	37	45	67	76	84
MECHANICAL ENDURANCE	operations	n°	8000	8000	5000	5000	3000	3000
ELECTRICAL LIFE	operations	n°	1000	1000	1000	1000	500	500
POWER LOSSES PER POLE	-	W	8.2	8.8	8.8	23	25	34

Note 1: Due to harmonics and tolerance of the capacitors, the rated values have been reduced by 33%.



Dimensions mm	Ø	A	B	C	D1	D2	E	G	H	J1	J2	K1	K2	L	M	N1	N2
BPV25	10.5	44	82	235	268	-	292	25	164	171	68	55	105	59	165	4	5
BPV30	10.5	44	82	235	268	-	292	25	165	171	68	54	105	59	165	5	5
BPV40	10.5	44	82	235	268	-	292	25	165	171	68	54	105	59	165	5	5
BPV63	12.5	65	109	245	307	-	340	30	218	212	82	60	126	59	165	5	6
BPV80	12.5	65	109	245	307	-	340	30	206	229	88	55	126	59	165	10	12
BPV100	12.5	87	130	365	425	485	525	40	388	255	85	57	144	59	165	8	8