

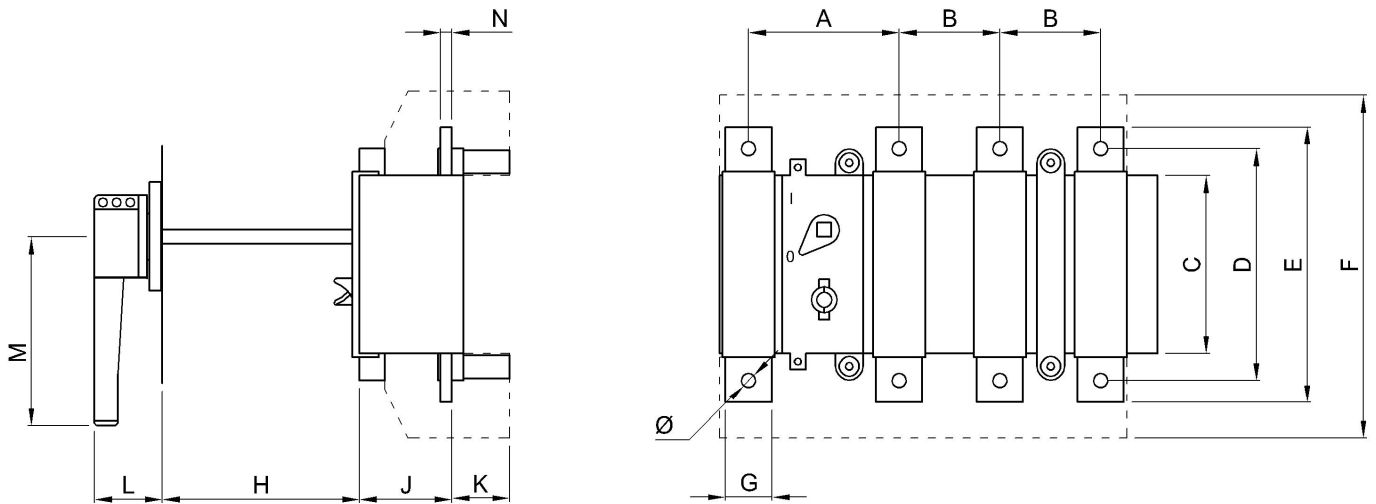
Switchgear Systems Ltd - Technical Data Sheet

INS Isolators 200A - 1000A

- Manufactured by Contactplasma S.R.L. Italy.
- Designed and tested in compliance with BS EN 60947-3.

TYPE (SERIES)			INS20	INS25	INS30	INS40	INS63	INS80	INS100					
RATED THERMAL CURRENT AT 40° MAX A.T. I_{th}	Enclosed	A	200	250	315	400	630	800	1000					
RATED VOLTAGE OF ISOLATION	a.c.	V	1000	1000	1000	1000	1000	1000	1000					
	d.c.	V	1000	1000	1000	1000	1000	1000	1000					
IMPULSE WITHSTAND VOLTAGE	-	kV	8	8	8	8	8	8	8					
OPERATIONAL CURRENT	AC23A	I_e	415V	200/105	250/132	315/155	400/200	630/355	800/400	1000/500				
			500V	200/125	250/160	315/200	400/280	630/425	800/560	1000/670				
			690V	200/175	250/220	315/275	400/375	400/375	800/710	800/710				
OPERATIONAL CURRENT	AC22A	I_e	690V	A	200	250	315	400	630	800	1000			
			1000V											
REACTIVE POWER see Note 1	380V	kVAr	100	125	150	250	315	350	400					
RATED SHORT CIRCUIT MAKING CAPACITY I_{cm}	415V	kA peak	25	31	37	44	50	63	84					
MECHANICAL ENDURANCE	operations	n°	8000	8000	8000	5000	5000	3000	3000					
ELECTRICAL LIFE	operations	n°	1000	1000	1000	1000	1000	500	500					
POWER LOSSES PER POLE	-	W	8	8.2	13	20	50	50	55					

Note 1: Due to harmonics and tolerance of the capacitors, the rated values have been reduced by 33%.



Dimensions mm	Ø	A	B	C	D	E	F	G	H	J	K	L	M	N
INS20	8.5	82	44	98	113	141	178	20	97	64	26	59	125	3
INS25	10.5	109	65	108	136	161	234	25	77	77	32	59	125	4
INS30	10.5	109	65	108	136	161	234	30	77	77	32	59	125	4
INS40	10.5	109	65	108	136	161	234	30	77	77	32	59	125	4
INS63	12.5	130	87	164	200	238	333	40	159	83	42	59	165	6
INS80	12.5	130	87	164	200	238	333	40	159	83	42	59	165	6
INS100	12.5	130	87	164	200	238	333	40	159	83	38	59	165	10